

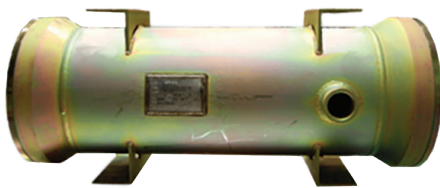


4240 Air Separation Membrane

OVERVIEW

Air Liquide Advanced Separations MEDAL **4240** delivers uncompromising performance within a compact design. By utilizing a proven polymer blend and advanced hollow fiber technology, the unit generates an optimal balance of flux and selectivity for on-site nitrogen supply. The **4240** is deployed into large volume applications that require sustained N₂ production over an extended duration, while minimizing feed-air/compression costs. The **4240** provides an available option to supply the bare bundle separately from the housing vessel.

VESSEL PHOTO



OPERATING CHARACTERISTICS

MAXIMUM OPERATING TEMPERATURE	65°C (149°F)
MAXIMUM OPERATING PRESSURE (VESSEL)	17.2 barg (250 psig)
MAXIMUM OPERATING PRESSURE (BUNDLE)	24.1 barg (350 psig)
MAXIMUM FEED AIR OIL CONTENT	< 5 µg/Nm ³
NITROGEN MOISTURE CONTENT	< -70°C (-95°F) Dew Point

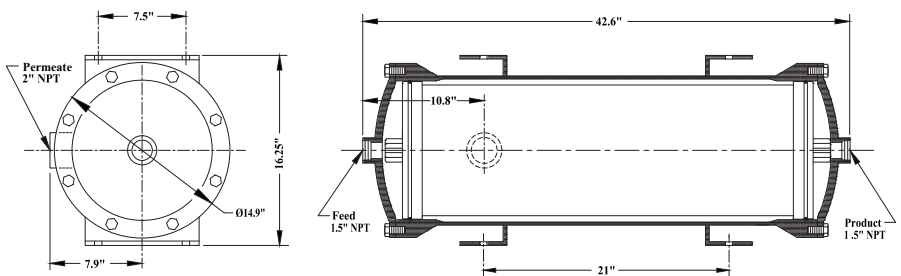
PHYSICAL CHARACTERISTICS

WEIGHT (MODULE ONLY)
29.4 kgs (65 lbs)

WEIGHT (MODULE AND VESSEL)
159 kgs (350 lbs)

VESSEL MATERIAL
Zinc chromate plated carbon steel

DIMENSIONS



PERFORMANCE DATA

		4240 NEA Flow Rate (Nm ³ /hr) / Feed Air Flow Rate (Nm ³ /hr)						
		PURITY (%)						
		95%	96%	97%	98%	99%	99.5%	99.9%
PRESSURE (psig)	350	516 / 972	434 / 882	356 / 795	279 / 708	191 / 598	138 / 532	72 / 450
	300	433 / 821	364 / 746	299 / 673	234 / 600	160 / 508	116 / 452	61 / 384
	250	351 / 672	295 / 611	242 / 552	190 / 493	130 / 419	94 / 374	49 / 318
	200	269 / 523	226 / 476	186 / 432	146 / 387	100 / 330	72 / 295	38 / 252
	150	189 / 376	159 / 344	131 / 313	103 / 281	70 / 241	51 / 217	27 / 187
	100	111 / 232	94 / 214	77 / 196	61 / 177	42 / 154	31 / 140	16 / 122

*assumes 57 Nm³/hr productivity and 35% recovery @ 45C and new conditions

Air Liquide Advanced Separations
305 Water St
Newport, DE 19804
TELEPHONE: 302-225-1100
EMAIL: info.medal@airliquide.com